

# dbMotion IHE Integration

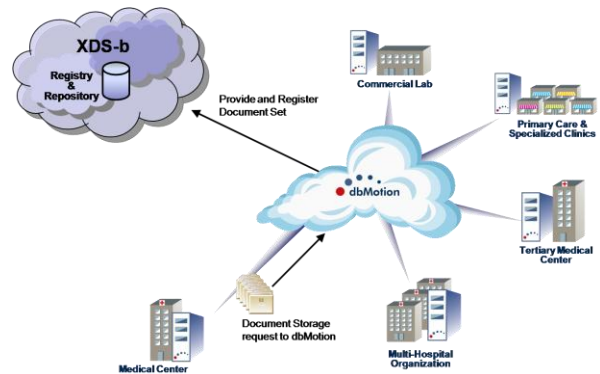
## dbMotion IHE Profiles

| Integration Profiles Implemented                        | Actors Implemented  | Options Implemented            |
|---|---------------------|--------------------------------|
| Audit Trail and Node Authentication (ATNA)              | Secure Node         |                                |
| Consistent Time (CT)                                    | Time Client         |                                |
| Cross-Enterprise Documents Share (XDS.b)                | Document Registry   | Patient Identity Feed (HL7 V3) |
|   | Document Repository |                                |
|   | Document Consumer   |                                |
| Cross-Enterprise Document Sharing for Imaging (XDS-I.b) | Document Registry   |                                |
|   | Document Repository |                                |

## dbMotion Business Use Cases

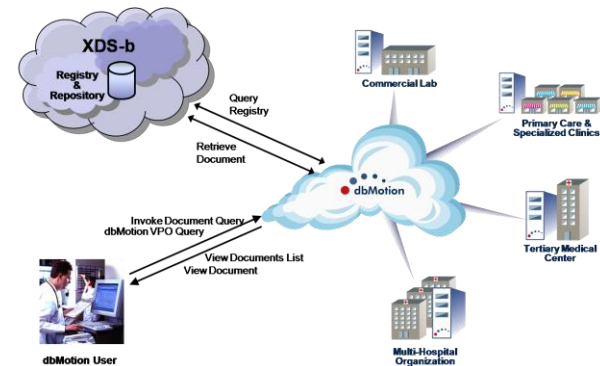
### Use Case 1: dbMotion as Document Source

- Allows an application to submit a new document or replace an existing document in a central Document Repository
  - Producer and publisher of documents
  - Responsible for sending documents to a Document Repository
  - Supplies metadata to the Document Repository for subsequent registration of the documents with the Document Registry



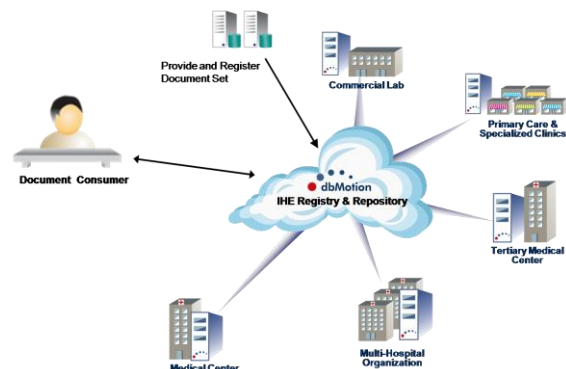
### Use Case 2: dbMotion as Document Consumer

- Allows an application to issue IHE defined queries for documents against a central Document Registry
  - Queries a Document Registry for documents meeting certain criteria, and retrieves selected documents from one or more Document Repositories
- Allows an application to issue non-IHE defined queries for documents against a central Document Registry
  - Converts the non-IHE defined queries to IHE defined queries
  - Queries a Document Registry Actor for documents meeting certain criteria, and retrieves selected documents from one or more Document Repository actors



### Use Case 3: dbMotion as Document Repository & Registry

- Document Repository
  - Responsible for storing documents in a transparent, secure, reliable and persistent manner and responding to document retrieval requests
- Document Registry
  - Responsible for storing information about those documents so that the documents of interest for the care of a patient may be easily found, selected and retrieved irrespective of the repository where they are actually stored
- Documents are provided by one or more Document Sources & are then accessed by one or more Document Consumers



## IHE & dbMotion Features

| Feature               | IHE  | dbMotion  |
|-----------------------|--|---|
| Solution Scope        | Requires building and developing on top of a number of frameworks in order to create a comprehensive solution  | Comprehensive package including data unification, storage, security, communication, auditing, tracking, patient identification    |
| Demographics          | IHE-PDQ framework  | Interfaces EMPI systems through VIA   |
| Unique Identity       | IHE-PIX framework  | Interfaces EMPI systems through VIA   |
| Data                  | IHE-XDS framework including centralized or distributed registry and storage: <ul style="list-style-type: none"> <li>– Document driven</li> <li>– No structured data</li> </ul> | Patient-centric HL7 V3 UMS based providing document and clinical domains capable of dealing with structured and unstructured data |
| Security              | IHE-ATNA provides secure communication framework and guidelines  | Built-in transversal Security Layer providing security and confidentiality at all levels of the architecture                      |
| Tracking and Auditing | IHE-ATNA provides secure auditing and traceability   | Built-in transversal secure auditing and tracking capabilities at all levels  |
| Business              | N/A, required to build business layer on top of existing frameworks  | Out of the box business domain  |
| Presentation          | N/A, required to build presentation layer on top of existing frameworks  | Clinical Views, SmartWatch, SDKs, etc.  |
| Response Time         | N/A  | Up to 6 seconds   |
| SOA                   | Service oriented based on ebXML  | SOA, any web service can be implemented   |
| Deployments           | Some of the frameworks have been implemented however no comprehensive solution based on IHE exists   | Clalit, UPMC, Bronx RHIO, LUMC  |

### About dbMotion

dbMotion fulfills the vision of connected healthcare. Our health interoperability solution enables healthcare organizations and health information exchanges (HIEs) to meaningfully integrate and leverage their information assets, driving improvements in the quality, safety and efficiency of patient care. dbMotion transforms care through the creation of an integrated patient record that bridges gaps between inpatient/acute care and community care.

P/N 00158 02/10 V.1

# Appendix: IHE Integration Statement

## January 2010

|               |   |                     |   |                |   |              |
|---------------|---|---------------------|---|----------------|---|--------------|
| <b>Vendor</b> | ● | <b>Product Name</b> | ● | <b>Version</b> | ● | <b>Date</b>  |
| dbMotion Ltd. |   | dbMotion            |   | Release 3.8    |   | January 2010 |

This product implements all transactions required in the IHE Technical Framework to support the IHE Integration Profiles, Actors and Options listed below:

| Integration Profiles Implemented                        | Actors Implemented  | Options Implemented            |
|---|---------------------|--------------------------------|
| Audit Trail and Node Authentication (ATNA)              | Secure Node         |                                |
| Consistent Time (CT)                                    | Time Client         |                                |
| Cross-Enterprise Documents Share (XDS.b)                | Document Registry   | Patient Identity Feed (HL7 V3) |
|   | Document Repository |                                |
|   | Document Consumer   |                                |
| Cross-Enterprise Document Sharing for Imaging (XDS-I.b) | Document Registry   |                                |
|   | Document Repository |                                |

Internet address for vendor's IHE information: [www.dbmotion.com](http://www.dbmotion.com)

Links to general information in IHE:

In North America: <http://www.rsna.org/IHE>

In Europe: <http://ihe-europe.org>

In Japan: <http://jira-net.or.jp/ihe-j>

---

### About dbMotion

dbMotion fulfills the vision of connected healthcare. Our health interoperability solution enables healthcare organizations and health information exchanges (HIEs) to meaningfully integrate and leverage their information assets, driving improvements in the quality, safety and efficiency of patient care. dbMotion transforms care through the creation of an integrated patient record that bridges gaps between inpatient/acute care and community care.